

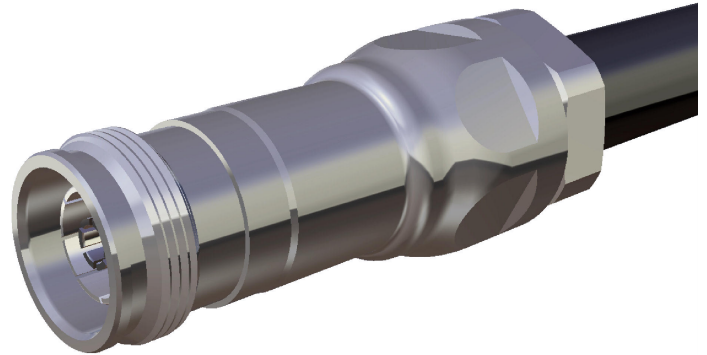
## Coaxial Cable Connector 21\_4310-50-12-1/003\_-

### Description

Straight cable jack

Interface standards

IEC 61169-54



### Technical Data

#### Electrical Data

Impedance	50 $\Omega$
Interface frequency max.	12 GHz

#### Mechanical Data

Centre contact	plugged
Outer contact	clamped
Weight	0.1063 kg

#### Environmental Data

Operating temperature	-55 °C to 90 °C
2011/65/EU (RoHS - including 2015/863 and 2017/2102)	compliant

#### Material Data

Piece Parts	Material	Surface Plating
Centre contact	Copper Beryllium Alloy	Silver Plating
Outer contact	Bronze	Silver Plating
Body	Brass	SUCOPLATE (R) Plating
Insulator	PTFE (Polytetrafluoroethylene)	
Gasket	EPDM (Ethylene propylene diene rubber)	

### Related Documents

Outline drawing	DOU-00283420
Catalogue drawing	DCA-00293621
Assembly instruction	DOC-0000386367

### Ordering Information

Single package	21_4310-50-12-1/003_-E
----------------	------------------------

### Additional Information

Suitable cables	SUCOFEED_1/2, SUCOFEED_1/2_LW, SUCOFEED_1/2_FR, CELLFLEX LCF12-50JFN, HELIAX LDF4-50A, NK OHMAX RFA 1/2-50
-----------------	--

